



### ABOUT SILVER SPRINGS 5046

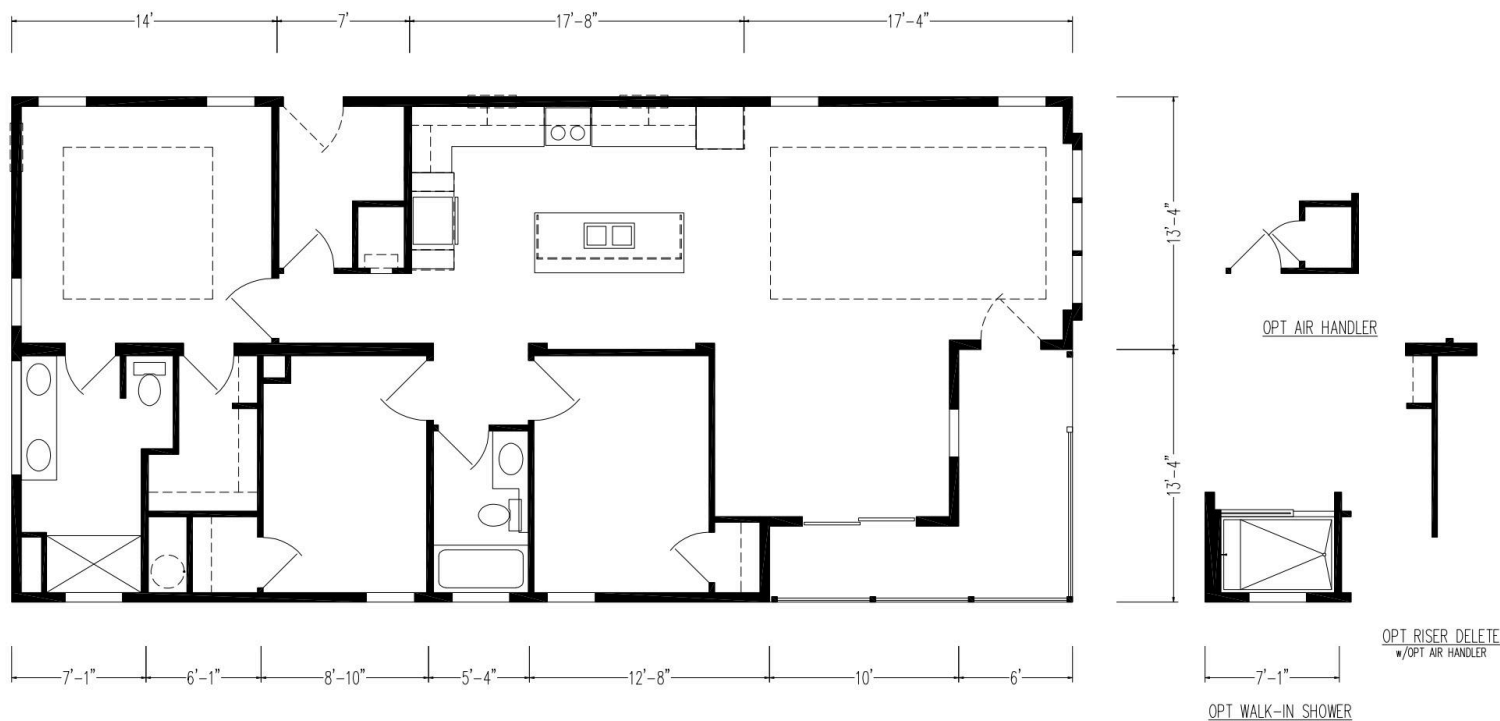


The Silver Springs 5046 is a spacious manufactured home offering 1,378 square feet of customizable living space. This thoughtfully designed model exemplifies Skyline Homes' reputation as one of America's most trusted manufactured and modular home builders. Built to federal HUD building code standards, the Silver Springs provides homebuyers with various personalization options for the kitchen, primary bath, and other areas, allowing you to create a space that truly reflects your lifestyle and preferences. With its practical layout and quality construction, this home represents an excellent choice for those seeking a manufactured housing solution that balances comfort, customization, and value.

### CONSTRUCTIONS ASPECTS THAT SET SILVER BAY APART FROM THE COMPETITION

- Our homes are set on poured continuous concrete footers with rebar, all homes have engineered carports that feature insulated aluminum walk on roof panels, and custom built outside utility rooms.
- All homes have only 2 steps (14in) from carport level up into the home.
- All homes will be built with 2x6 exterior walls with high r value insulation packages and will be energy star rated, all air conditioning systems will be residential split systems
- All colors of finishes (floors, counters, cabinets, walls, fixtures, exterior siding) are customizable and some room configurations and walls are customizable within the floorplans.

### FLOOR PLAN



### SPECIAL FEATURES

- Split bedroom design (master separated from other bedrooms)
- Covered porch for outdoor living
- Walk-in pantry in kitchen
- Kitchen island with seating area
- Dedicated dining space
- Spacious master suite with luxury bathroom
- Mudroom entry from garage



Give us a call today!

+1 386-916-3764

#### ADDRESS

7110 Old Wolf Bay Rd., Palatka, FL 32177, USA

#### STAY UPDATED



silverbaypalatka



silverbaypalatka

## SILVER BAY

LUXURY LIVING

Silver Bay isn't just about finding a home—it's about embracing a lifestyle of ease, comfort, and connection. We've thoughtfully designed every aspect of our community to provide the best in 55+ living, ensuring that every resident experiences both convenience and joy in their everyday life.