



### ABOUT PIERCE



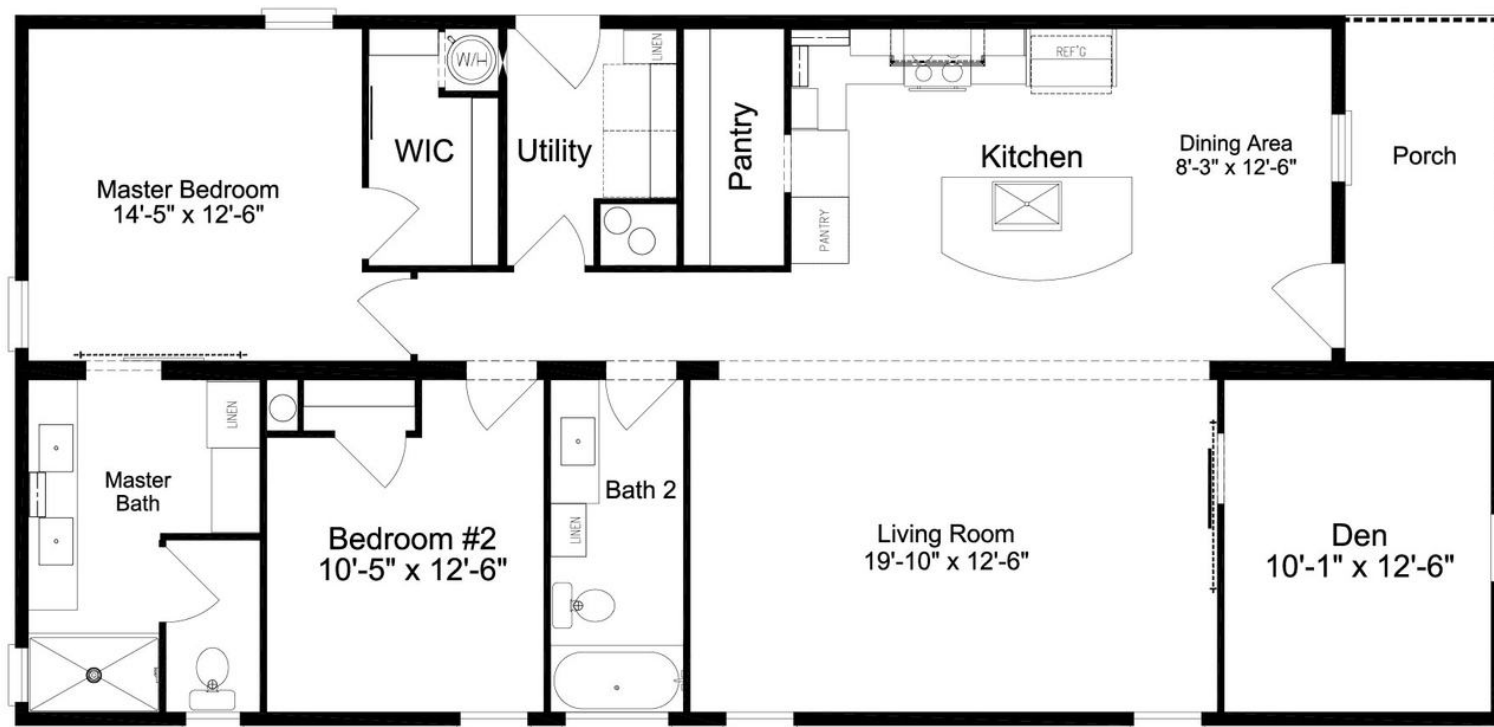
The Pierce is a stunning 34-foot manufactured home that combines modern design with practical living. This spacious 2-bedroom, 2-bathroom model offers an open floor plan with a seamless flow between the well-appointed kitchen, comfortable living area, and private master suite.

Built with quality craftsmanship, the Pierce prioritizes both style and functionality in its efficient layout, making it an ideal choice for small families or those looking to downsize without sacrificing comfort. With its attractive exterior and thoughtful interior design, this Palm Harbor home represents an excellent option for those seeking an affordable yet elegant manufactured housing solution.

### CONSTRUCTIONS ASPECTS THAT SET SILVER BAY APART FROM THE COMPETITION

- Our homes are set on poured continuous concrete footers with rebar, all homes have engineered carports that feature insulated aluminum walk on roof panels, and custom built outside utility rooms.
- All homes have only 2 steps (14in) from carport level up into the home.
- All homes will be built with 2x6 exterior walls with high r value insulation packages and will be energy star rated, all air conditioning systems will be residential split systems
- All colors of finishes (floors, counters, cabinets, walls, fixtures, exterior siding) are customizable and some room configurations and walls are customizable within the floorplans.

### FLOOR PLAN

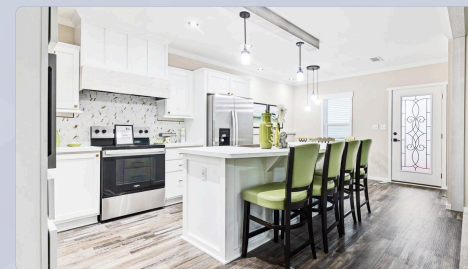


#### STANDARD FEATURES

- 8'6" Flat Ceiling Throughout
- Composite Porch Decking on Community Models
- Luxury Vinyl Tile in Kitchen, Baths, Utility Rooms
- Ceiling Fans with Light in Living Areas & Bedrooms
- Stainless Steel Appliance Package
- Wood Face Fames & Soft Close Cabinet Doors & Drawers
- Big Body Shower Tiles in 60" Master Bath Shower
- Full Tile Backsplash in Kitchen

#### OPTIONS

- 1/2 Horizontal Vinyl Bottom
- 1/2 Vertical Vinyl Top
- Vinyl Window & Door Trim (Front Door Side)
- 6" Vinyl Posts
- Painted Front Door
- Open Beam/Open Above
- Exterior Rated White Fan
- Double Window with Metal Shed Roof



Give us a call today!

+1 386-916-3764

#### ADDRESS

7110 Old Wolf Bay Rd., Palatka, FL 32177, USA

#### STAY UPDATED



silverbaypalatka



silverbaypalatka

## SILVER BAY

LUXURY LIVING

Silver Bay isn't just about finding a home—it's about embracing a lifestyle of ease, comfort, and connection. We've thoughtfully designed every aspect of our community to provide the best in 55+ living, ensuring that every resident experiences both convenience and joy in their everyday life.