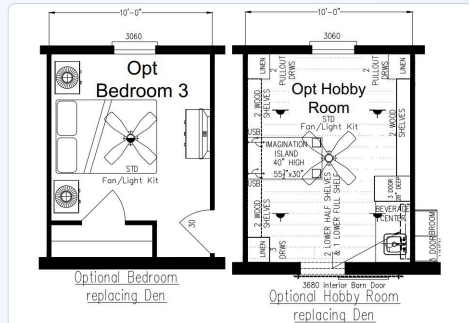




### ABOUT THE RYAN

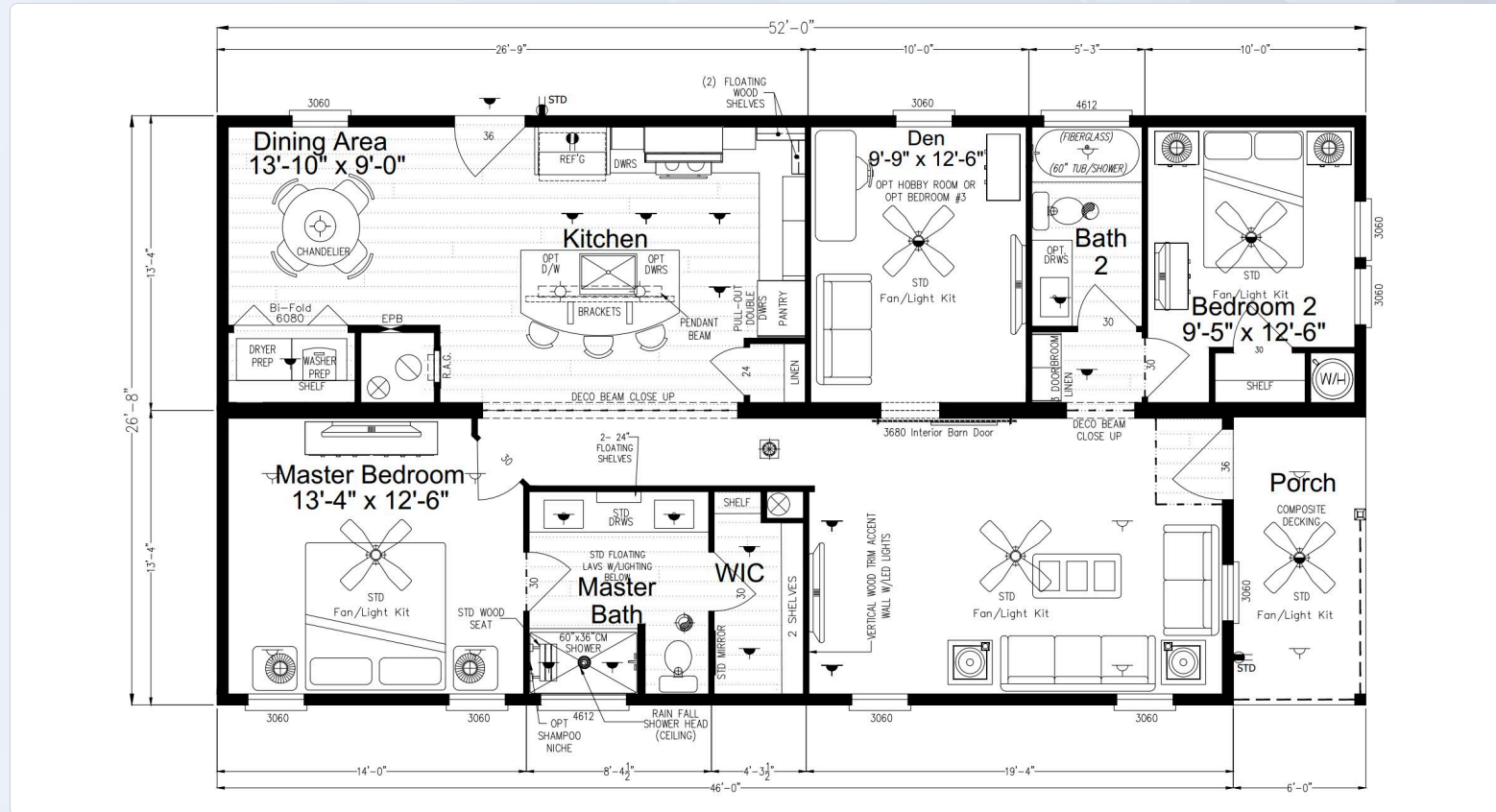


The Elite Series / The Ryan EL28522B built by Palm Harbor Homes is a beautifully designed manufactured home offering 2 bedrooms, 2 bathrooms, and 1386 square feet of inviting living space. With a smart floorplan that emphasizes comfort and flow, this home is ideal for those seeking both function and style. Whether relaxing or entertaining, every inch of space is thoughtfully used. The Ryan EL28522B delivers the charm and practicality today's homeowners appreciate.

### CONSTRUCTIONS ASPECTS THAT SET SILVER BAY APART FROM THE COMPETITION

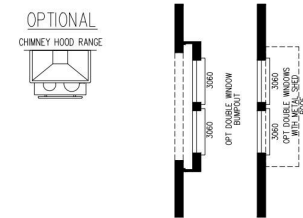
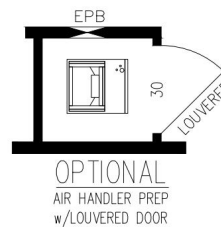
- Our homes are set on poured continuous concrete footers with rebar, all homes have engineered carports that feature insulated aluminum walk on roof panels, and custom built outside utility rooms.
- All homes have only 2 steps (14in) from carport level up into the home.
- All homes will be built with 2x6 exterior walls with high r value insulation packages and will be energy star rated, all air conditioning systems will be residential split systems
- All colors of finishes (floors, counters, cabinets, walls, fixtures, exterior siding) are customizable and some room configurations and walls are customizable within the floorplans.

### FLOOR PLAN



### STANDARD FEATURES

- 26'-8" x 52'
- 2 bedrooms / 2 bath
- Island kitchen
- Den model
- Front porch
- Eat-in dining room
- 60" tiled shower in master bath
- with Rainfall shower head



Optional Endwall Configurations

Give us a call today!

+1 386-916-3764

### ADDRESS

7110 Old Wolf Bay Rd., Palatka, FL 32177, USA

### STAY UPDATED



silverbaypalatka



silverbaypalatka

## SILVER BAY

LUXURY LIVING

Silver Bay isn't just about finding a home—it's about embracing a lifestyle of ease, comfort, and connection. We've thoughtfully designed every aspect of our community to provide the best in 55+ living, ensuring that every resident experiences both convenience and joy in their everyday life.