



ABOUT SILVER SPRINGS 5006

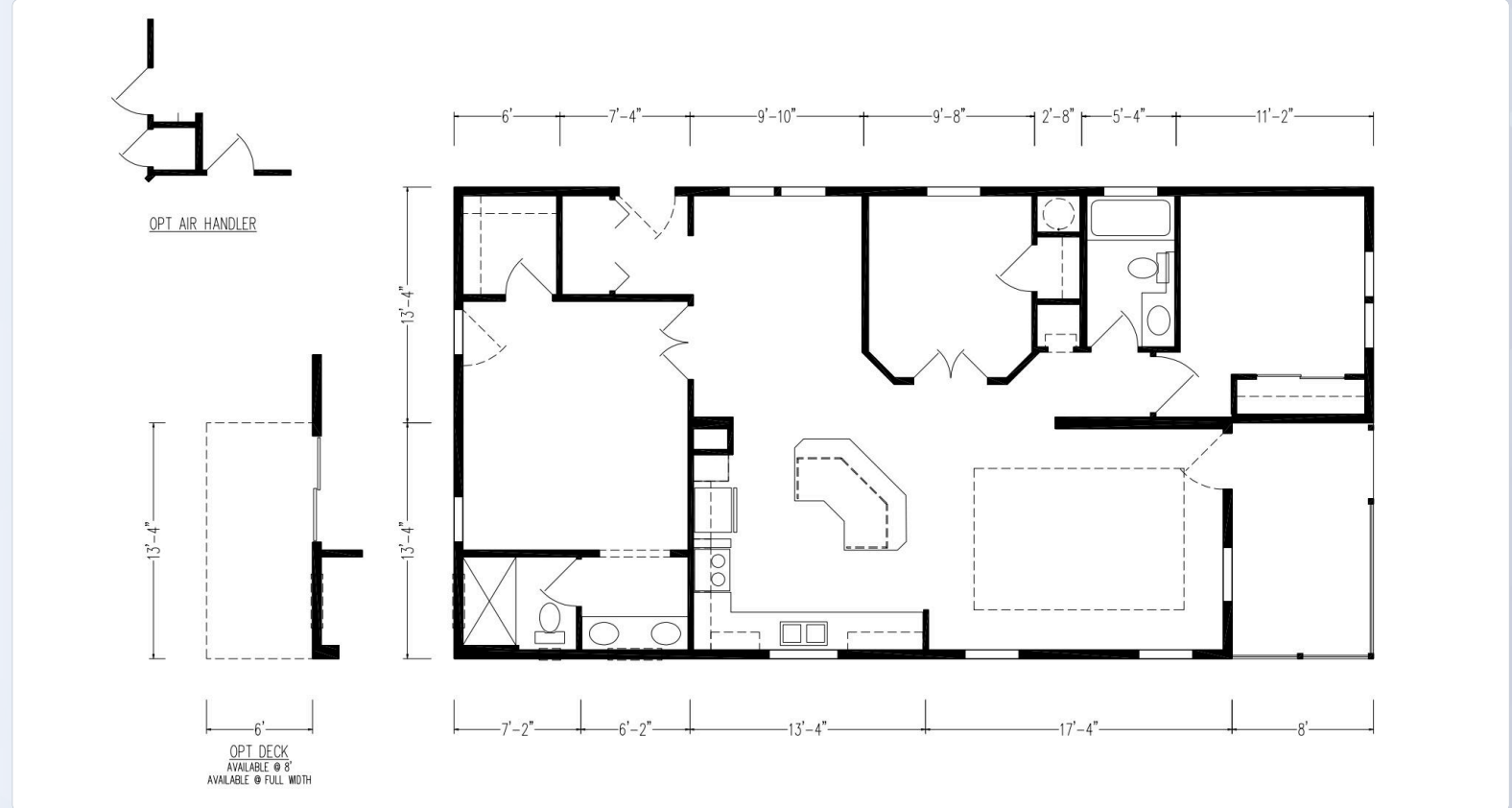


The Silver Springs 5006 is a compact yet well-designed manufactured home offering 1,246 square feet of living space. This model exemplifies Skyline Homes' commitment to quality and customization, built to federal HUD building code standards with various personalization options. As one of America's most trusted manufactured home builders, Skyline ensures that the Silver Springs 5006 combines affordability with quality construction in a thoughtfully designed layout that maximizes space efficiency. Perfect for those seeking a cozy yet functional living environment, this home represents an excellent choice for buyers looking for a tailored manufactured housing solution.

CONSTRUCTIONS ASPECTS THAT SET SILVER BAY APART FROM THE COMPETITION

- Our homes are set on poured continuous concrete footers with rebar, all homes have engineered carports that feature insulated aluminum walk on roof panels, and custom built outside utility rooms.
- All homes have only 2 steps (14in) from carport level up into the home.
- All homes will be built with 2x6 exterior walls with high r value insulation packages and will be energy star rated, all air conditioning systems will be residential split systems
- All colors of finishes (floors, counters, cabinets, walls, fixtures, exterior siding) are customizable and some room configurations and walls are customizable within the floorplans.

FLOOR PLAN



NOTABLE FEATURES

- Open-concept great room for family living.
- Modern kitchen with island and walk-in pantry.
- Spacious master suite with private bathroom.
- Split bedroom layout for added privacy.
- Two-car garage with direct home access.
- Covered front porch for outdoor relaxation.
- Dedicated laundry room for household efficiency.
- Functional dining area adjacent to the kitchen.



Give us a call today!
386-242-2488

ADDRESS
7110 Old Wolf Bay Rd., Palatka, FL 32177, USA

STAY UPDATED

[silverbaypalatka](https://www.facebook.com/silverbaypalatka)

[silverbaypalatka](https://www.youtube.com/silverbaypalatka)

SILVER BAY
LUXURY LIVING

Silver Bay isn't just about finding a home—it's about embracing a lifestyle of ease, comfort, and connection. We've thoughtfully designed every aspect of our community to provide the best in 55+ living, ensuring that every resident experiences both convenience and joy in their everyday life.

Putnam County
CHAMBER OF COMMERCE