



ABOUT ALEXA

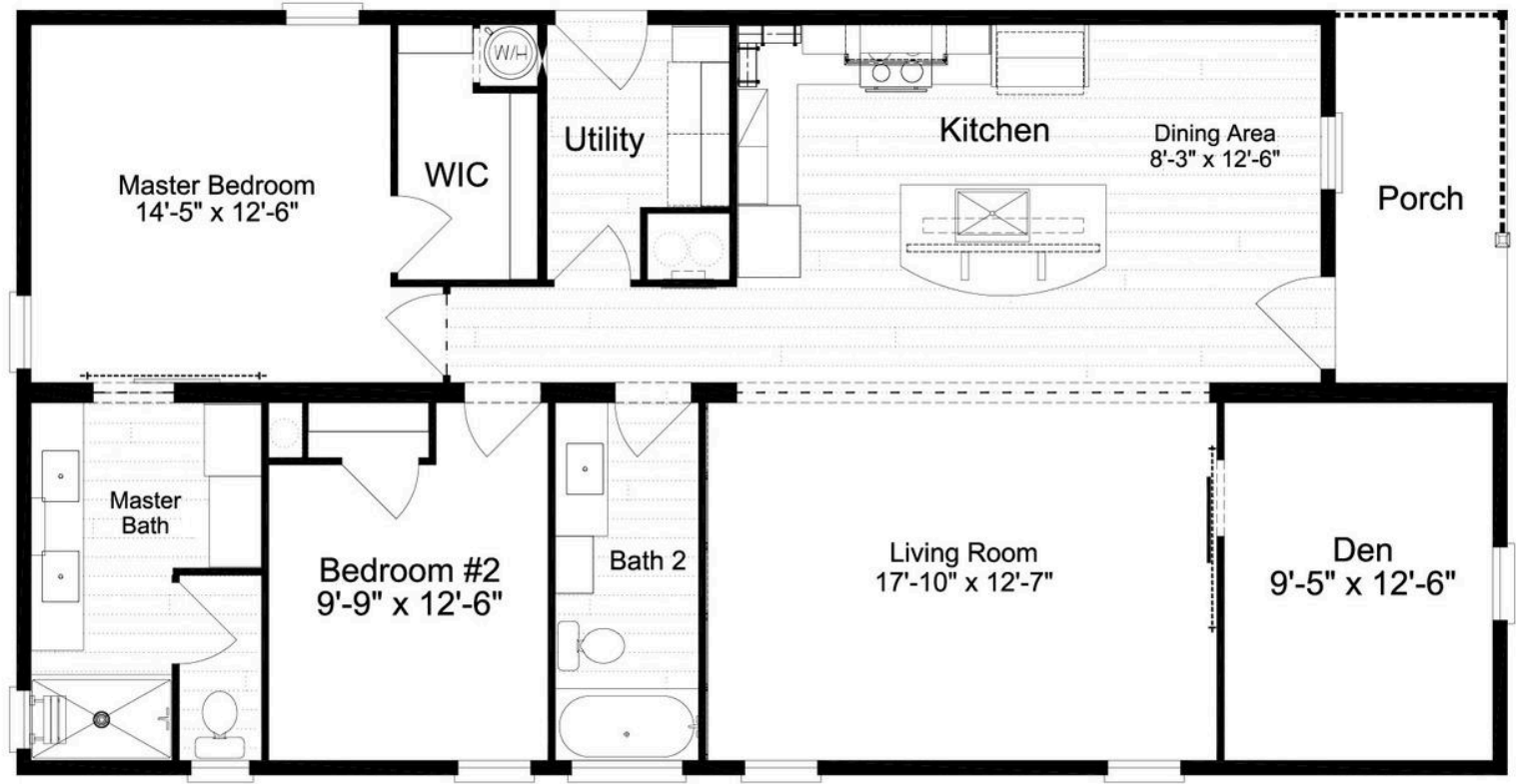


The Alexa is a beautifully designed 34-foot manufactured home that offers comfortable living in a thoughtfully arranged floor plan. This 2-bedroom, 2-bathroom model features 1,394 square feet of living space, providing an ideal balance of openness and privacy. The home showcases Palm Harbor's commitment to quality construction and modern design, making it perfect for small families or those looking to downsize without compromising on comfort. With its efficient layout and attractive features, the Alexa represents an excellent choice for homebuyers seeking an affordable yet elegant manufactured housing solution from Palm Harbor Homes, which ranks 8th in America's Most Trusted Manufactured Home Builder rankings.

CONSTRUCTIONS ASPECTS THAT SET SILVER BAY APART FROM THE COMPETITION

- Our homes are set on poured continuous concrete footers with rebar, all homes have engineered carports that feature insulated aluminum walk on roof panels, and custom built outside utility rooms.
- All homes have only 2 steps (14in) from carport level up into the home.
- All homes will be built with 2x6 exterior walls with high r value insulation packages and will be energy star rated, all air conditioning systems will be residential split systems
- All colors of finishes (floors, counters, cabinets, walls, fixtures, exterior siding) are customizable and some room configurations and walls are customizable within the floorplans.

FLOOR PLAN



STANDARD FEATURES

- 8'6" Flat Ceiling Throughout
- Composite Porch Decking on Community Models
- Luxury Vinyl Tile in Kitchen, Baths, Utility Rooms
- Ceiling Fans with Light in Living Areas & Bedrooms
- Stainless Steel Appliance Package
- Wood Face Fames and Soft Close Cabinet Doors and Drawers
- Big Body Shower Tiles in 60" Master Bath Shower
- Full Tile Backsplash in Kitchen

OPTIONS

- 1/2 Horizontal Vinyl Bottom
- 1/2 Vertical Vinyl Top
- Vinyl Window & Door Trim (Front Door Side)
- 6" Vinyl Posts
- Painted Front Door
- Open Beam/Open Above
- Exterior Rated White Fan
- Double Window with Metal Shed Roof



Give us a call today!
386-242-2488

ADDRESS
7110 Old Wolf Bay Rd., Palatka, FL 32177, USA

STAY UPDATED



[silverbaypalatka](https://www.facebook.com/silverbaypalatka)



[silverbaypalatka](https://www.youtube.com/silverbaypalatka)

SILVER BAY
LUXURY LIVING

Silver Bay isn't just about finding a home—it's about embracing a lifestyle of ease, comfort, and connection. We've thoughtfully designed every aspect of our community to provide the best in 55+ living, ensuring that every resident experiences both convenience and joy in their everyday life.