



URL:
www.silverbaypalatka.com/floor-plan/colby/

ABOUT COLBY

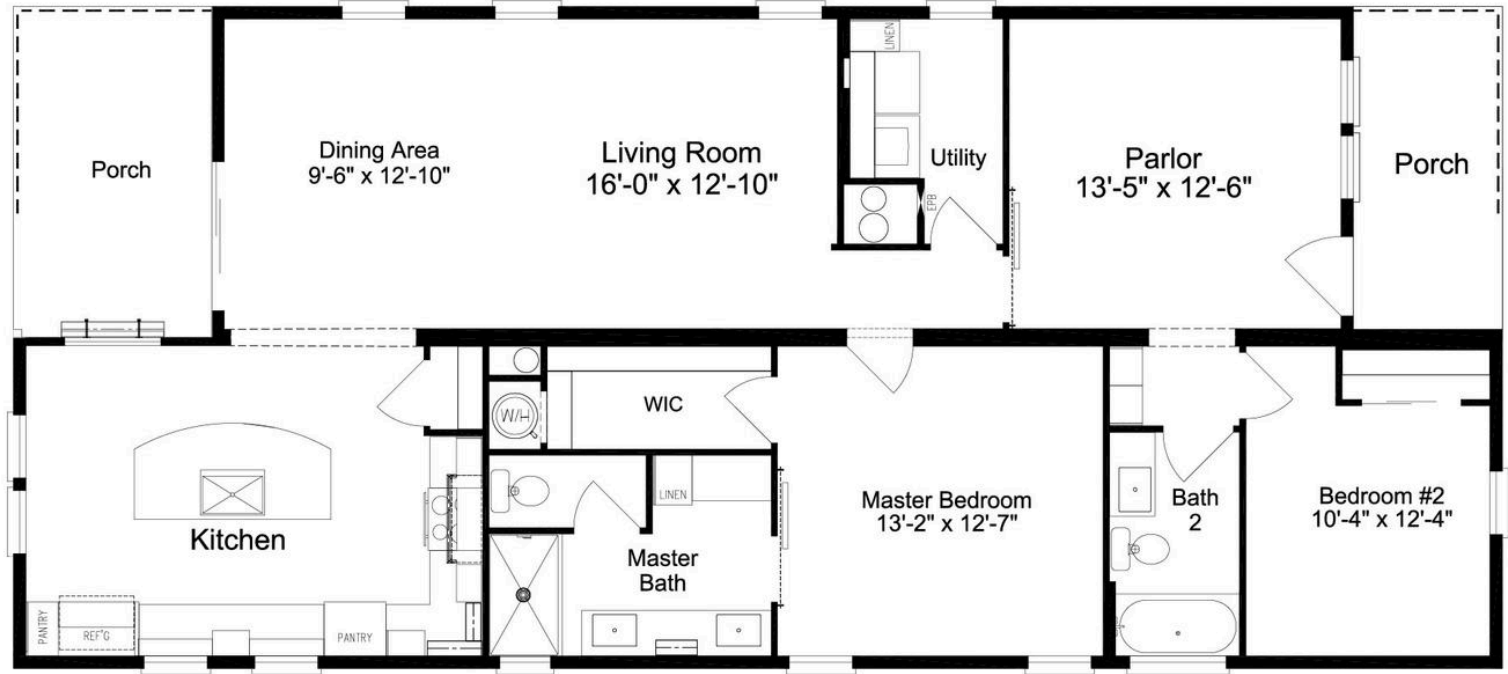


The Colby is an elegant 34-foot manufactured home that showcases Palm Harbor's commitment to quality and thoughtful design. This attractive model features 8'6" flat ceilings throughout, luxury vinyl tile in the kitchen, bathrooms, and utility rooms, and comes equipped with a stainless steel appliance package. The home's interior is enhanced with ceiling fans with lights in all living areas and bedrooms, while the kitchen boasts wood face frames and soft-close cabinet doors and drawers for added convenience and style. With its practical layout and premium features, the Colby represents an excellent choice for those seeking a manufactured home that combines functionality with modern comfort.

CONSTRUCTIONS ASPECTS THAT SET SILVER BAY APART FROM THE COMPETITION

- Our homes are set on poured continuous concrete footers with rebar, all homes have engineered carports that feature insulated aluminum walk on roof panels, and custom built outside utility rooms.
- All homes have only 2 steps (14in) from carport level up into the home.
- All homes will be built with 2x6 exterior walls with high r value insulation packages and will be energy star rated, all air conditioning systems will be residential split systems
- All colors of finishes (floors, counters, cabinets, walls, fixtures, exterior siding) are customizable and some room configurations and walls are customizable within the floorplans.

FLOOR PLAN



STANDARD FEATURES

- 8'6" Flat Ceiling Throughout
- Composite Porch Decking on Community Models
- Luxury Vinyl Tile in Kitchen, Baths, Utility Rooms
- Ceiling Fans with Light in Living Areas & Bedrooms
- Stainless Steel Appliance Package
- Wood Face Frames and Soft Close Cabinet Doors and Drawers
- Big Body Shower Tiles in 60" Master Bath Shower
- Full Tile Backsplash in Kitchen

OPTIONS

- 1/2 Horizontal Vinyl Bottom
- 1/2 Vertical Vinyl Top
- Vinyl Window & Door Trim (Front Door Side)
- 6" Vinyl Posts
- Painted Front Door
- Open Beam/Open Above
- Exterior Rated White Fan
- Double Window with Metal Shed Roof



Give us a call today!
386-242-2488

ADDRESS
7110 Old Wolf Bay Rd., Palatka, FL 32177, USA

STAY UPDATED



[silverbaypalatka](https://www.facebook.com/silverbaypalatka)



[silverbaypalatka](https://www.youtube.com/silverbaypalatka)

SILVER BAY

LUXURY LIVING

Silver Bay isn't just about finding a home—it's about embracing a lifestyle of ease, comfort, and connection. We've thoughtfully designed every aspect of our community to provide the best in 55+ living, ensuring that every resident experiences both convenience and joy in their everyday life.